

GB

C 110 - 01

Vela COMPACT

Instantaneous
wall-hung
combination
gas boiler

Width
**400
mm**

Height
**700
mm**

Depth
**250
mm**



CE



BRAND NAME

NOVA FLORIDA

BOILERS

Instantaneous wall-hung combination gas boiler

Vela COMPACT

the heat making your home warmer



- ✓ **SMALL** in its exceptionally space-efficient dimensions
- ✓ **PRACTICAL** for simple and convenient installation
- ✓ **EASY** for uncomplicated, intuitive operation
- ✓ **COMPLETE** with comprehensive functionality
- ✓ **HIGH EFFICIENCY**

★★★ efficiency rating for CTFS model
(according to dir. 92/42/CEE)



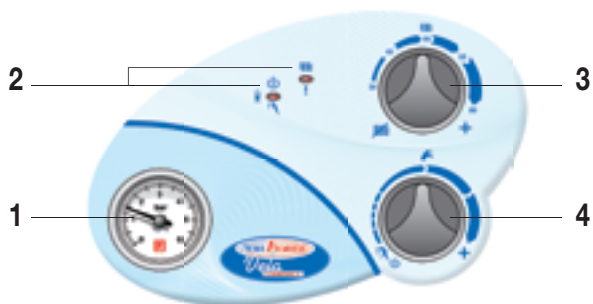
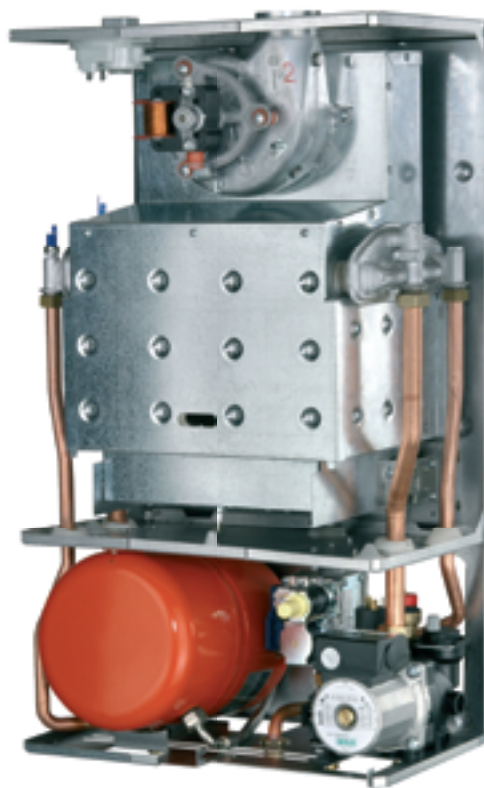
The new dimension of compactness

Vela Compact is the newest instantaneous wall-hung combination boiler by Nova Florida, designed to condense dimensions to a minimum without giving up technological and quality contents; it is conceived for intuitive user operation. Thanks to its dimensions, it can be installed inside kitchen wall cupboards and wherever space efficiency is a must.

Vela Compact is available in two versions, open chamber and natural draught (CTN) or sealed chamber and forced draught (CTFS), providing heat outputs respectively of 22.2 kW and 23.7 kW.

The tasteful design of its control panel goes well along with its intuitive operation, allowing the user to instantly set boiler parameters.

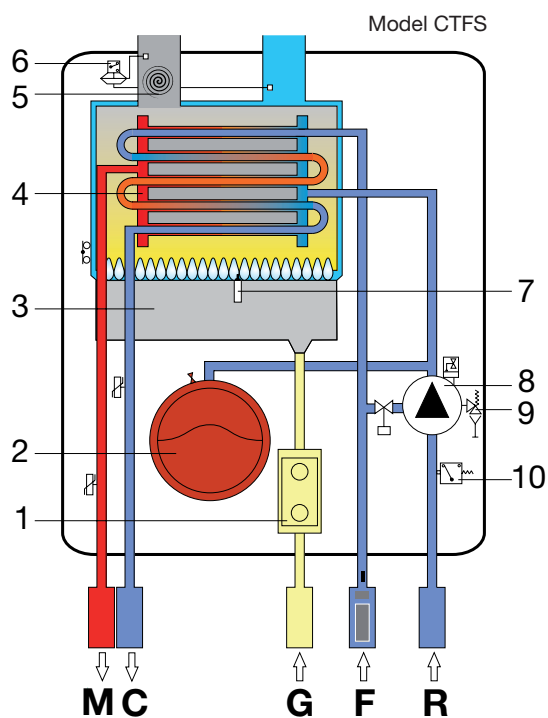
Multi-color LED technology provides complete and effective operation diagnostic; the manometer, conveniently located and easy to read, displays central heating system pressure.



- 1 Manometer
- 2 Multicolor LED diagnostic, operating mode indicators
- 3 Summer/winter / central heating water temperature adjuster
- 4 Domestic hot water temperature adjuster / boiler reset



HYDRAULIC LAYOUT



- 1 Gas valve
- 2 Expansion vessel
- 3 Burner
- 4 Bi-thermal exchanger
- 5 Flue gas discharge fan
- 6 Flue gas safety pressure switch
- 7 Ignition/flame detection electrode
- 8 Pump
- 9 3 bar safety valve
- 10 Water pressure switch

Vela

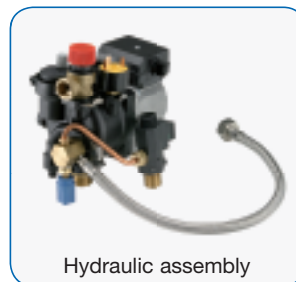
COMPACT

Wall-hung combination gas boiler with instantaneous domestic hot water supply, available in two versions:

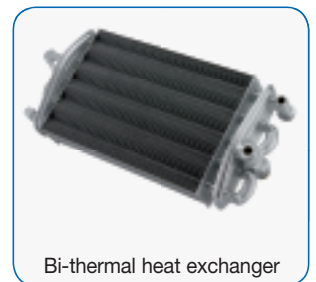
- open chamber and natural draught (CTN)
- sealed chamber and forced draught (CTFS)
- Designed as standard to be fired with natural gas or LPG
- Central heating and domestic hot water supply
- Compact dimensions l x h x d: 400 x 700 x 250 mm;
- 5-pipe, copper, bi-thermal, high efficiency heat exchanger
- Integrated safety board with burner electronic ignition and flame sensing via single electrode
- Multi-color Led technology function diagnostics
- Anti-fast, anti-frost, pump anti-blocking, pump post-circulation functions
- Pump assembly includes water pressure switch, 3 bar safety valve, system loading assembly with loading and unloading taps
- 92/42/CEE efficiency rating:

CTN 24 AF ★★

CTFS 24 AF ★★★



Hydraulic assembly



Bi-thermal heat exchanger

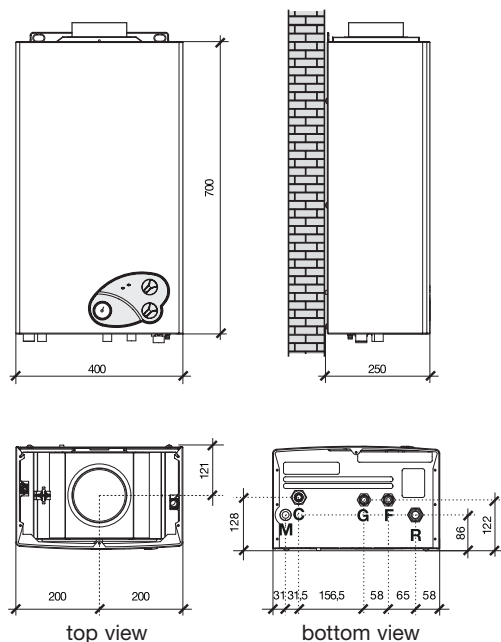
**COMPANY
WITH QUALITY SYSTEM
CERTIFIED BY DNV
=ISO 9001/2000=**

Awareness of quality as strategic tool, both esthetically and technically, guarantees reliability and life span operation to all Nova Florida products: evidence of internal quality procedure implementation. The product quality is attained through **UNI EN ISO 9001:2000** certified quality system management. A global quality system; and additional warranty for the Customer.

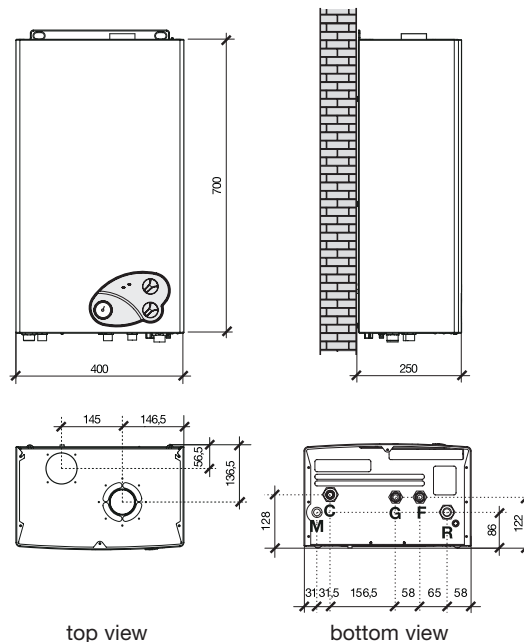


DIMENSIONS

CTN 24 AF



CTFS 24 AF



Coupling positions
installing articles
code 0KITIDBA07 - 0KITIDBA09.

G Gas inlet (1/2")
M Central heating flow (3/4")
C Domestic hot water outlet (1/2")

F Domestic cold water inlet (1/2")
R Central heating return (3/4")

ACCESSORIES

Item	Description	Code
	Standard split pipe kit for COMPACT boilers	OSDOPPIA07
	"Plus" split pipe kit for COMPACT boilers (pipes 0.5 meter long duct)	OSDOPPIA08
	Paper template (delivered as standard with boiler)	ODIMACAR05
	Metal template for COMPACT boilers	ODIMMEC004
	Standard hydraulic kit COMPACT (copper pipes and straight taps)	0KITIDBA09
	"Plus" hydraulic kit for COMPACT (copper pipes, 90 degree taps and bi-cones)	0KITIDBA07

The boiler packaging includes:

- Paper template
- Air intake opening sealing cap
- Fixing plugs
- Technical manual

VELA COMPACT

TECHNICAL DATA			
		CTFS 24 AF	CTN 24 AF
Category		II 2H3P	II 2H3P
Number of nozzles		11	11
Max heat input	kW	25.5	24.5
Reduced CH input	kW	12.5	12
Max heat output	kW	23.7	22.2
Reduced CH output	kW	11.2	10.8
Efficiency at max heat output	%	93	90.6
Efficiency at 30% heat output	%	90.2	90
92/42/CEE efficiency rating		★★★	★★
CO ₂ at max heat output (natural gas)	%	6.3	5.7
CO ₂ at min heat output (natural gas)	%	2.7	2.7
Chimney heat losses with burner on	%	5.8	6.1
ΔT flue gas/air at max heat output	°C	107	85
Casing heat losses (indoor boiler installation)	%	1.2	3.2
Flue gas mass flow rate (natural gas G20)	g/s	16	16.7
Consumption at max output:			
Natural gas (G20)	m ³ /h	2.7	2.59
Butane gas (G30)	kg/h	2.01	1.93
Propane gas (G31)	kg/h	1.98	1.9
DHW supply ΔT 30°C	l/min	11.4	10.6
Minimum DHW flow rate	l/min	3	3
Min-max DHW pressure	bar	0.5 - 8	0.5 - 8
Maximum DHW temperature	°C	58	58
Minimum DHW temperature	°C	35	35
Expansion vessel capacity	l	6	6
Min-max central heating system pressure	bar	0.5 - 3	0.5 - 3
Maximum CH water temperature	°C	83	83
Minimum CH water temperature	°C	35	35
Burner maximum pressure	Natural gas (G20)	mbar	12.5
Burner minimum pressure	Natural gas (G20)	mbar	3
Burner maximum pressure	Butane gas (G30)	mbar	28
Burner minimum pressure	Butane gas (G30)	mbar	7
Burner maximum pressure	Propane gas (G31)	mbar	36
Burner minimum pressure	Propane gas (G31)	mbar	9.5
CH flow/return diameter		G 3/4	G 3/4
DHW inlet/outlet diameter		G 1/2	G 1/2
Gas coupling diameter		G 1/2	G 1/2
Flue gas discharge pipe diameter	mm	-	130
Air intake/flue gas coaxial discharge pipe diameter	mm	60/100	-
Air intake/flue gas split discharge pipe diameter	mm	80+80	-
Tension/frequency	V/Hz	230/50	230/50
Total electric power absorbed	W	140	80
Fuse	A	2	2
Control panel protection rating		IPX4D	IPX4D
LxHxD	mm	400x700x250	
Weight	Kg	27.5	24.85

The manufacturer reserves the right to implement modifications without notice.

FONDITAL S.p.A.

25078 VESTONE (Brescia) Italy - Via Mocenigo, 123

Tel. +39 0365 878.31 - Fax +39 0365 820.200

e mail: info@fondital.it - www.fondital.it

COMPANY
WITH QUALITY SYSTEM
CERTIFIED BY DNV
=ISO 9001/2000=

