

Wall-hung, encased boilers - outdoor installation

Pictor Dual IN



PICTOR DUAL CTFS 24 IN - CTFS 28 IN - CTFS 32 IN

Encased, wall-hung, gas-fired, combination boiler with sealed chamber and forced draught

- The boiler is pre-set to run on natural gas or LPG.
- CH and DHW continuous flame modulation.
- Three-speed water pump.
- Mono-thermal heat exchanger.
- DHW plate heat exchanger.
- Integrated hydraulic assembly including three-way valve, DHW plate heat exchanger, safety valve, water pressure switch, system load/unload taps, connection to expansion vessel, disconnectable manual by-pass.
- DHW flow switch.
- 8 l expansion vessel (24 kW model) and 10 l expansion vessel (28 kW and 32 kW models).
- Remote control (standard equipment) managing all boiler functions.
- Pre-set for connection to zone management electric board (optional).
- Integrated flame sensing and modulation electronics including:
 - “chimney sweep” function
 - anti-frost function*
 - pump anti-blocking function
 - “post-circulation” function
 - “post-ventilation” function
 - “antifast” function
- Electric insulation rating: IP X5D.
- Efficiency rating according to 92/42/CEE: ★★ ★
- Optional anti-frost kit for external temperatures as low as -15°C.

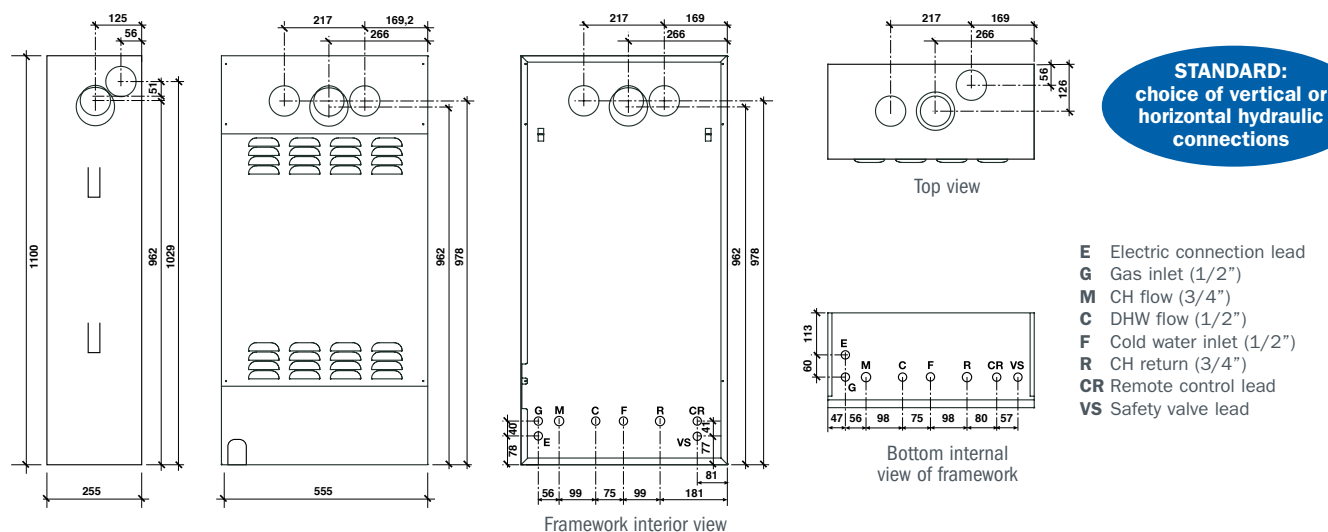
* Anti-frost function: the boiler electronics protect boiler with anti-frost function, against temperatures as low as -5 °C. More severe winter conditions require the installation of the electric resistance anti-frost kit (optional equipment). Electronics anti-frost function protects the boiler only. In order to prevent frost damages to other CH system components, it is advisable to use specific additives for CH systems.

Technical specifications

Model		Code	Output in kW	Efficiency at max output	Gross weight
PICTOR DUAL CTFS 24 IN	NAT. GAS	CPCxx2CA24	9.5 ÷ 23.8	93.20 %	Kg. 38.6
	LPG	CPCxx3CA24			
PICTOR DUAL CTFS 28 IN	NAT. GAS	CPCxx2CA28	10 ÷ 28.4	93.10 %	Kg. 39.6
	LPG	CPCxx3CA28			
PICTOR DUAL CTFS 32 IN	NAT. GAS	CPCxx2CA32	12.2 ÷ 31.3	93.10 %	Kg. 41.0
	LPG	CPCxx3CA32			
FRAMEWORK		OTELAINC99	ACCESSORY SOLD SEPARATELY		Kg. 21.7

STANDARD ADDITIONAL EQUIPMENT (included in the price): remote control, flue gas discharge diaphragm and air sealing tap kit

Dimensions of frame and coupling centre distances



Accessories

Item	Description	Code
	Split pipe standard kit, including air-intake terminal	OSDOPPIA06
	Air/flue gas initial coaxial pipe Ø 100/60 mm	OATTCOVE00
	Air/flue gas 90° initial coaxial curve Ø 100/60 mm with flange	OCURCOFL00
	Vertical connection kit with taps	OKITIST100
	Horizontal connection kit with taps	OKITIST101
	External temperature probe	OSONDAES01
	Electric kit (complete with external probe) for management of different CH temperature zones	OKITZONE00
	Electric resistance anti-frost kit	OKANTIGE00

Please see pages 70 - 71 - 72 - 73 for complete accessory list