

Combined instantaneous condensing encased boiler – outdoor installation

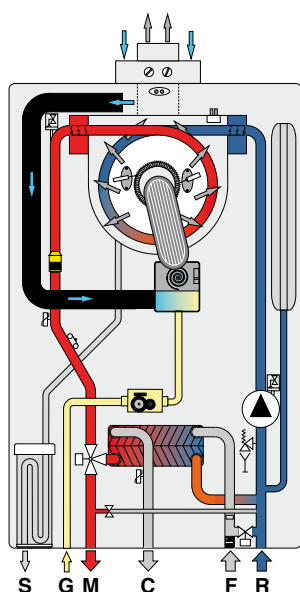
Pictor Condensing IN_{KC}



PICTOR CONDENSING IN KC 24 - KC 28

Wall-hung condensing pre-mixed boiler with instantaneous production of hot water on demand, sealed chamber. Available outputs: 24.8 and 27.4 Kw (50°C - 30°C).

- CH and DHW continuous flame modulation.
- 3-speed pump with air-purging device.
- Total premixing burner.
- Hydraulic assembly with increased secondary plate heat exchanger.
- DHW flow switch.
- 10 l expansion vessel.
- Integrated automatic by-pass.
- Motorized deviation valve.
- Boiler loading and draining tap.
- Standard remote control with capacity of managing all boilers functions.
- Integrated flame sensing and modulation electronics including:
 - “chimney sweep” function
 - anti-frost function
 - pump anti-blocking function
 - **“post-circulation” function**
 - “post-ventilation” function
 - “Antifast” function
- Pre-set to function with outdoor probe;
- Pre-set for zone management;
- Available to run on NATURAL GAS – PROPANE;
- Efficiency rating according to 92/42/CEE: ★★★★★



Remote control
(standard
equipment)

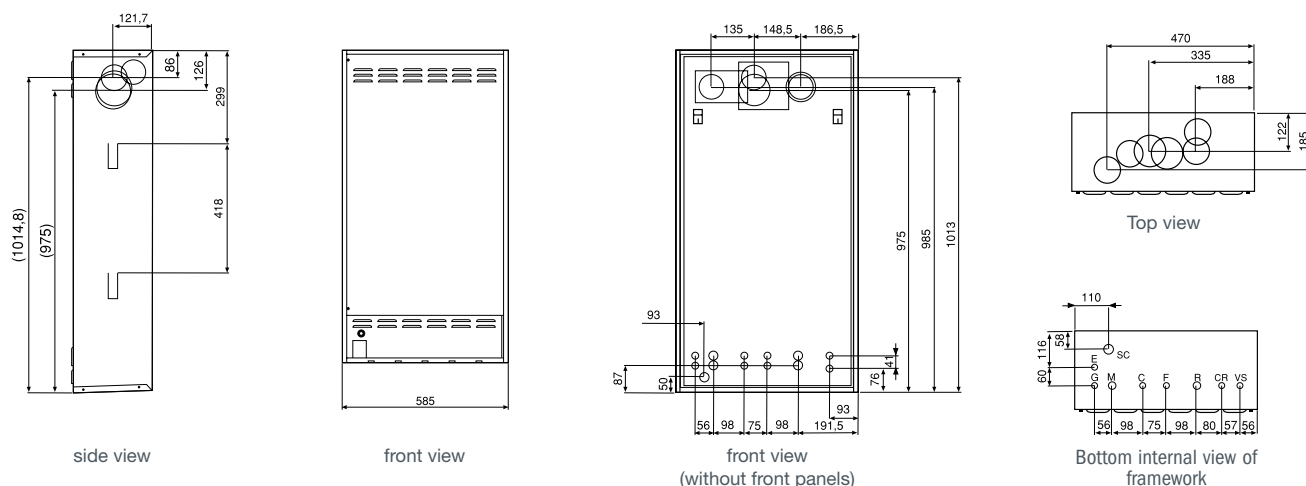


Technical specifications

Model		Code	Output in kW	Efficiency at max output	Gross weight
PICTOR CONDENSING IN KC 24	NAT. GAS	CPExx2C024	24.8	104.8 %	Kg. 40.8
	PROPANE	CPExx6C024			
PICTOR CONDENSING IN KC 28	NAT. GAS	CPExx2C028	27.4	105.4 %	Kg. 42.6
	PROPANE	CPExx6C028			
FRAMEWORK		OTELAINC03	ACCESSORY SOLD SEPARATELY		Kg. 16.8

STANDARD ADDITIONAL EQUIPMENT (included in the price): standard hydraulic kit, paper template, flue gas discharge diaphragm and air sealing tap kit.

Dimensions and coupling centre distances



STANDARD:
choice of vertical or
horizontal hydraulic
connections

G Gas inlet (1/2")
CR Remote control lead
M CH flow (3/4")
VS Safety valve lead
C DHW flow (1/2")

E Electric connection lead
F Cold water inlet (1/2")
SC Condensate discharge
R CH return (3/4")

Accessories

Item	Description	Code
	Coaxial kit Ø 60/100 length 0.75 m	0CONDASP00
	Coaxial coupling kit Ø 60/100	0KITATC000
	90° elbow and flange kit Ø 60/100	0KCURFLA00
	Split pipe kit Ø 80+80	0KITSDOP00
	Electric kit (complete with external probe) for management of different CH temperature zones	0KITZONE00
	External temperature probe	0SONDAES01
	Vertical connection kit with taps	0KITISTI00
	Horizontal connection kit with taps	0KITISTI01
	Electric resistance anti-frost kit	0KANTIGE00

For complete flue ducts components see page 74 - 75.