

Wall-hung combination condensing boilers with built-in storage

Libra Condensing



LIBRA CONDENSING LINE TECH KB 24 - KB 28

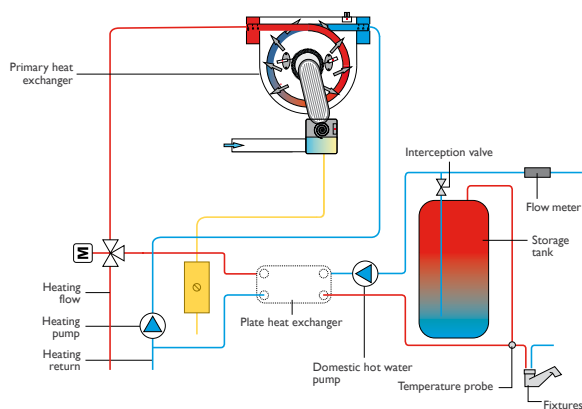
Wall-hung condensing premixed boiler with DHW storage-tank and sealed chamber. Available in two outputs 24.8 and 27.4 kW (50°C - 30°C). The boiler is pre-set to run on natural gas or propane.

- Thermopolymer and stainless steel heat exchanger.
- Total premixing burner.
- Modulating gas valve with constant air-to-gas ratio.
- Variable speed combustion fan.
- 3-speed pump with air-purging device.
- 10 l. expansion vessel.
- Flame modulation in heating and DHW modes;
- Electronic ignition, flame sensing via ionization.
- NTC temperature probe in heating and DHW modes.
- LCD interface with diagnostics.
- Standard bypass.
- DHW exchanger with stainless steel plates.
- Motorized deviating valve.

Possibility of connection to:

- external probe
- remote control
- zone management for low temperature.
- 92/42/CEE efficiency rating: ★★★★★
- NOx emission class (EN 297): 5

“AQUA PREMIUM SYSTEM” includes a plate heat exchanger and a compact stratification water tank for large DHW withdrawals and is capable of supplying 16.3 l/min and 18.3 l/min respectively for the KB 24 and KB 28 models.



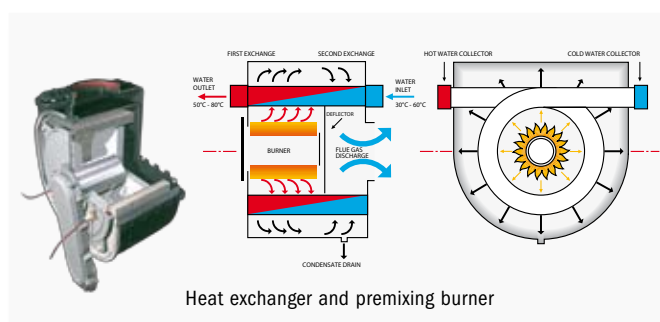
DHW supply in 10 minutes

LIBRA CONDENSING LINE TECH KB 24	163 l/10 min.
LIBRA CONDENSING LINE TECH KB 28	183 l/10 min.

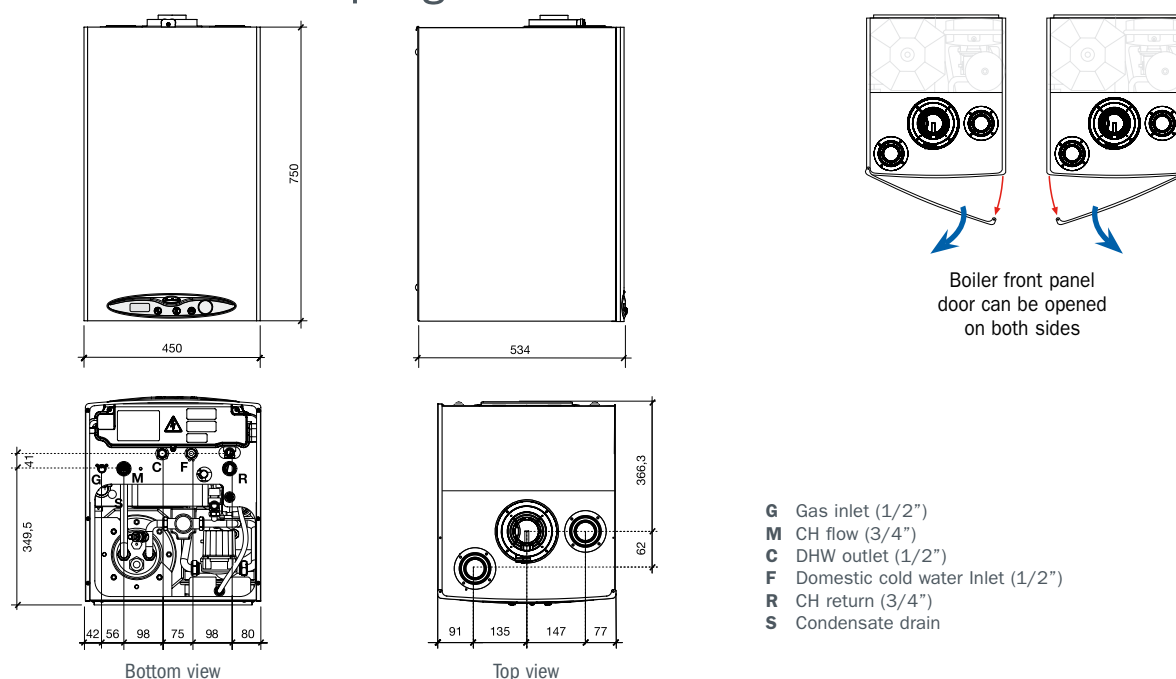
Technical specifications

Model		Code	Output in kW	Efficiency at max output	Gross weight
LIBRA CONDENSING LINE TECH KB 24	NAT. GAS	CLOxx2BR24	24.8	104.8 %	Kg. 78.8
	PROPANE	CLOxx6BR24			
LIBRA CONDENSING LINE TECH KB 28	NAT. GAS	CLOxx2BR28	27.4	105.4 %	Kg. 81.8
	PROPANE	CLOxx6BR28			

STANDARD ADDITIONAL EQUIPMENT (included in the price): standard hydraulic kit, paper template, flue gas discharge diaphragm and air sealing tap kit.



Dimensions and coupling centre distances



Accessories

Item	Description	Code
	Split pipe kit Ø 80+80	OKITSDOP00
	Coaxial kit Ø 60/100 length 0.75 m	OCONDASP00
	Coaxial coupling kit Ø 60/100	OKITATC000
	90° elbow and flange kit Ø 60/100	OKCURFLA00
	Remote control	OCREMOT005
	External temperature probe	OSONDAES01
	Electric kit (complete with external probe) for management of different CH temperature zones	OKITZONE00
	Paper template (delivered as standard with the boiler)	ODIMACAR04
	Metal template	ODIMMEC003
	Standard hydraulic kit (delivered as standard with the boiler)	OKITIDBA06
	Coated stainless steel flexible hydraulic connection kit. No. 2 x 3/4" - No. 3 x 1/2" - L: 260/560 mm	OKITIDTR00
	Gas and water tap kit	OKITRUBI01
	Boiler frame	OCOPERIG01
	Anti-frost kit	OKANTIGE00
	Pipes and taps cover	OCOPETUB02

For complete flue ducts components see page 74 - 75.